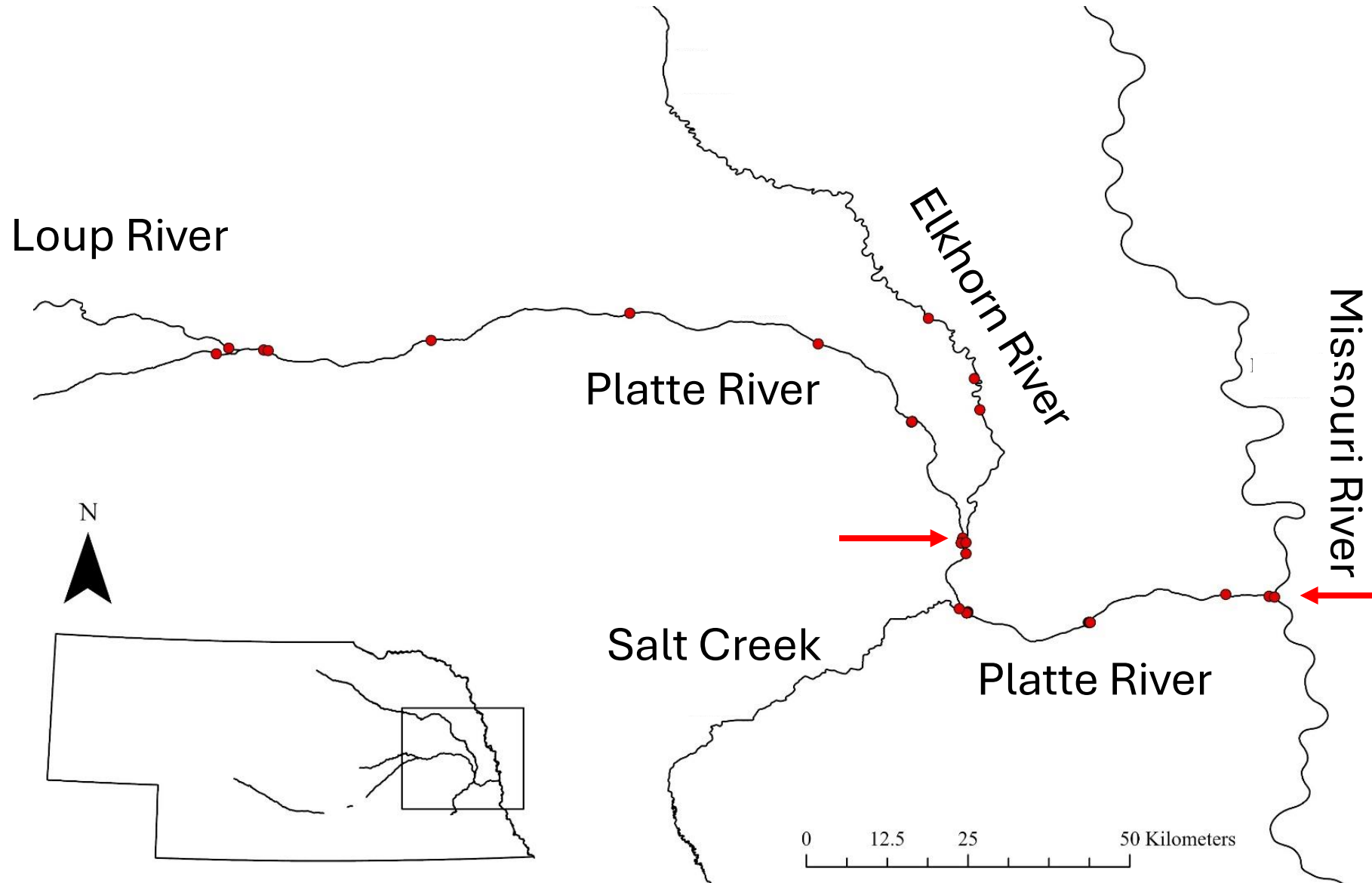


# UNL/NGPC Platte River Pallid Sturgeon Research Update as of April 17, 2024

Mark Pegg, Jonathan Spurgeon Kirk Steffensen  
Jenna Ruoss, Christopher Pullano

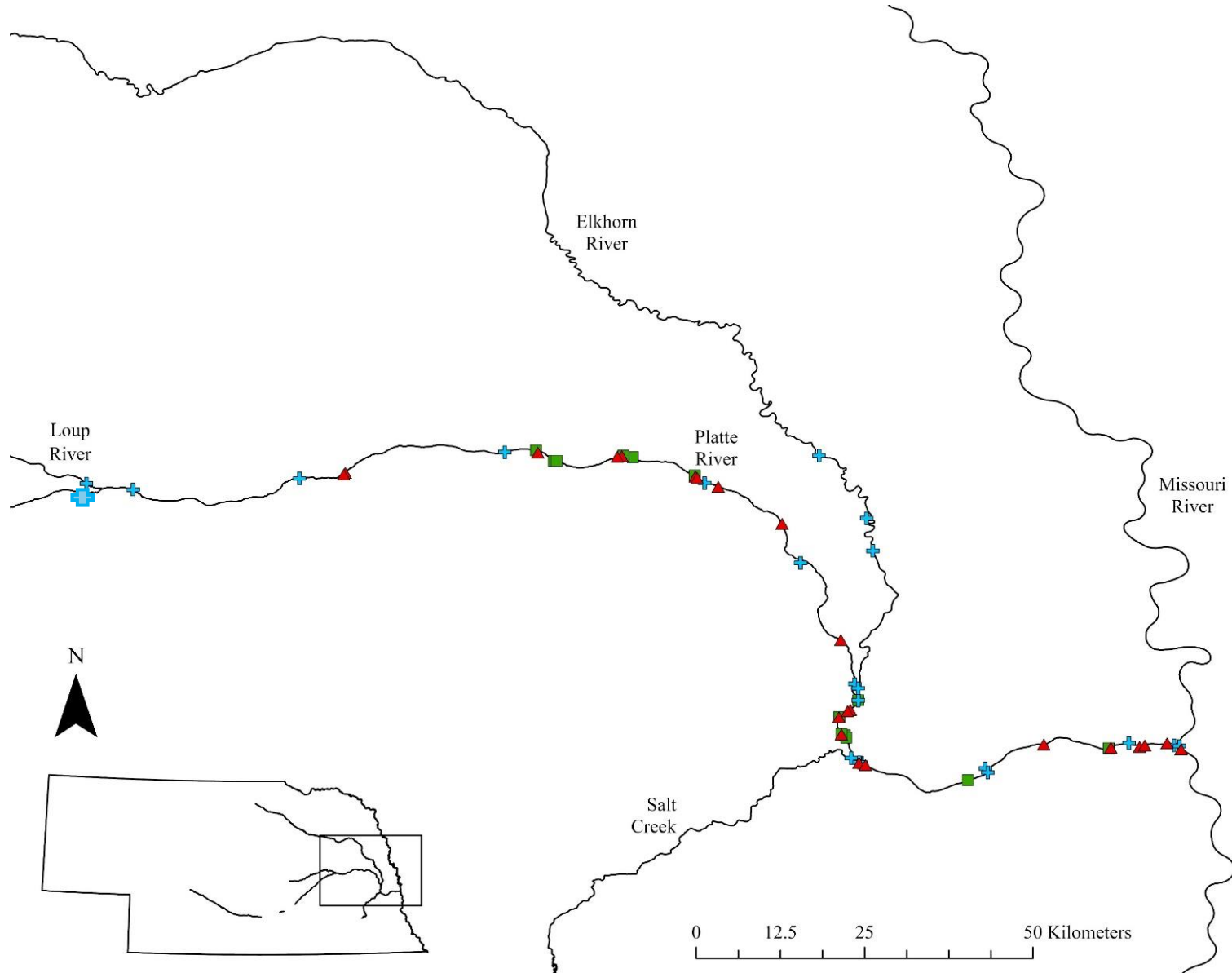


# Receiver Placement Spring 2024



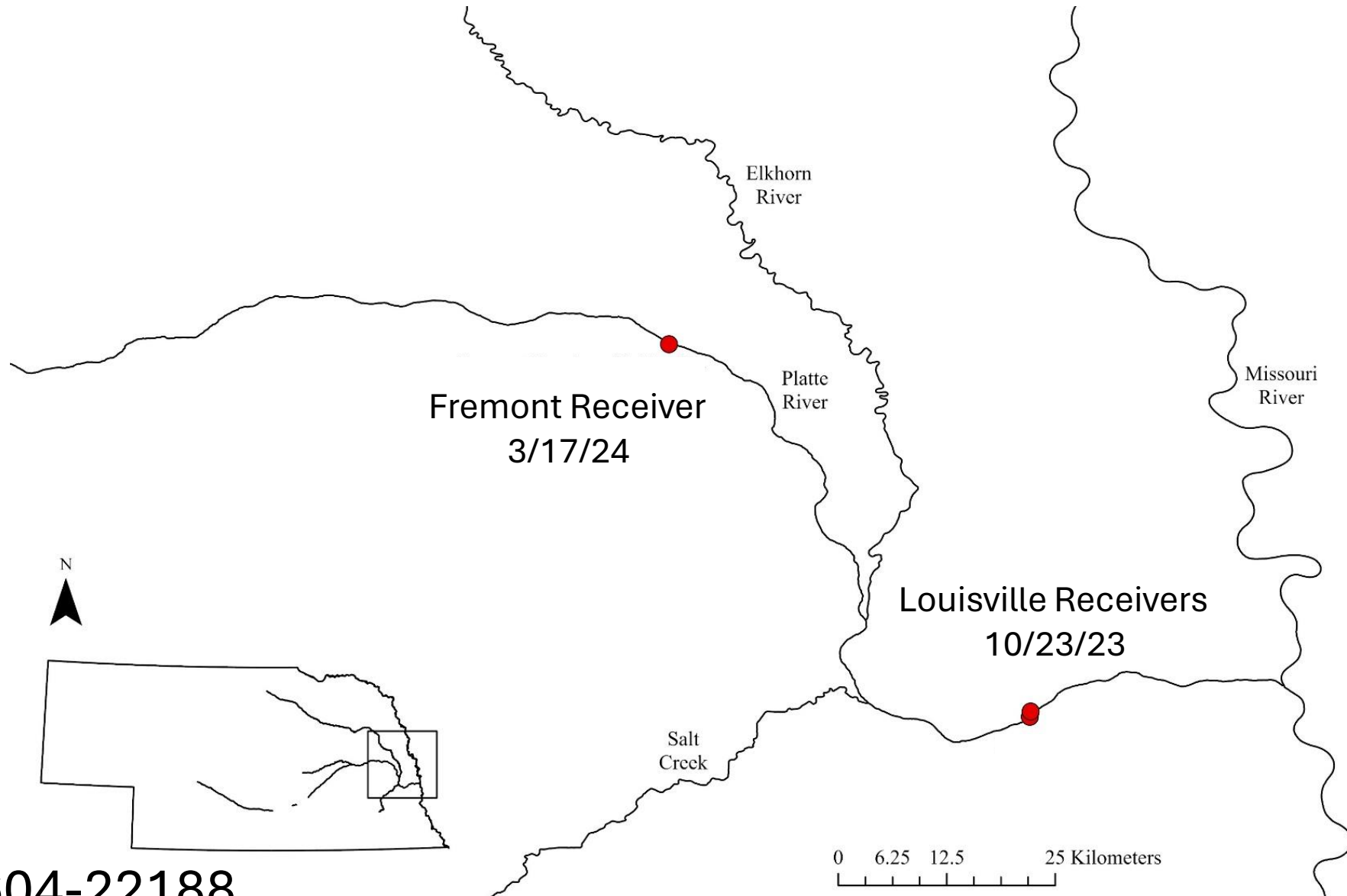
- Receivers added upstream of the Elkhorn River mouth in the Platte River and closer to the Platte River mouth

# Detections and Captures for Spring 2024



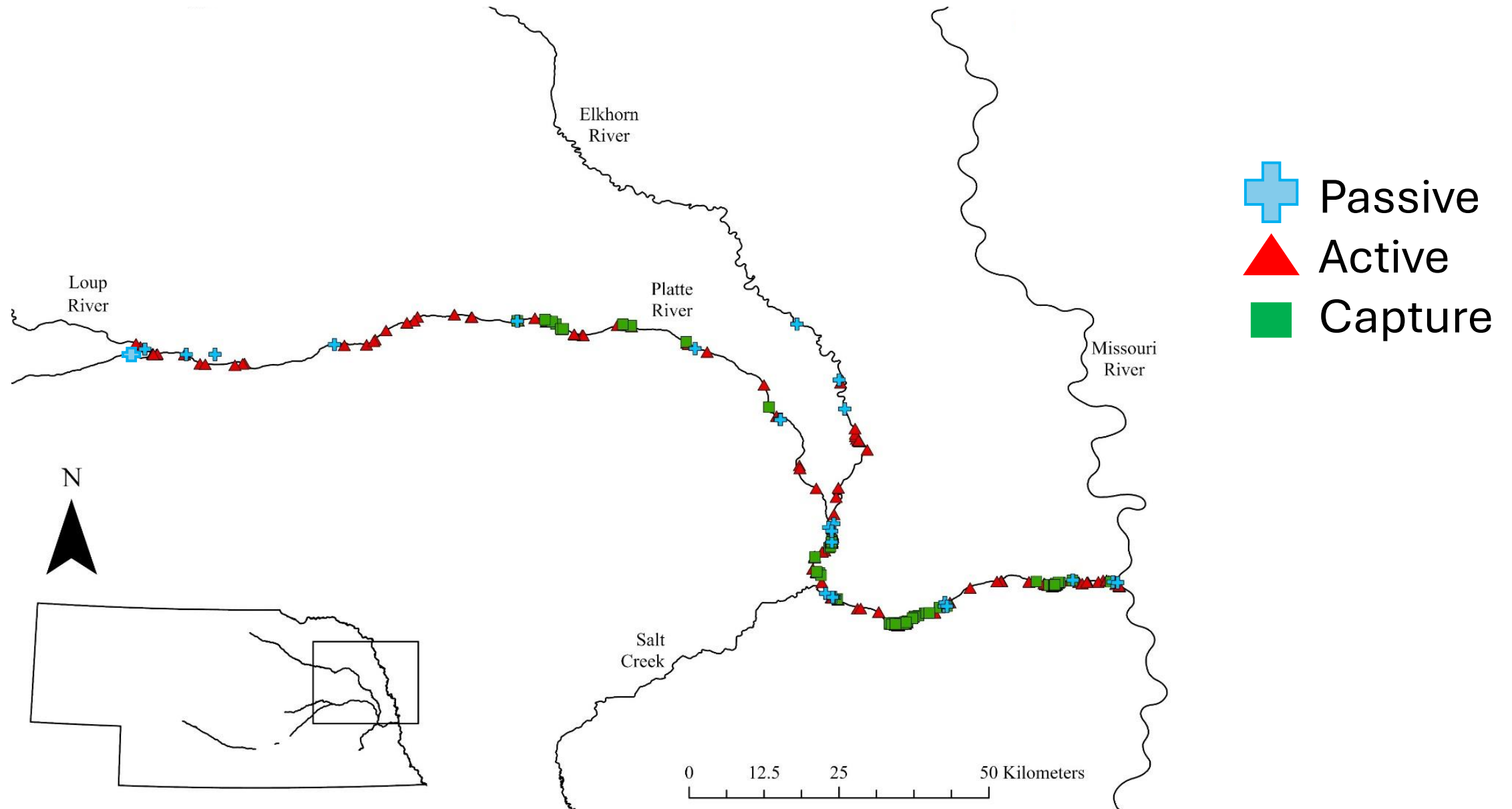
- + 823 passive detections**
  - 22 unique Pallid Sturgeon
  - Detection on Platte River receiver upstream of the Loup (currently in the Loup confluence area)
- ▲ 22 active detections**
  - 19 unique Pallid Sturgeon
- 13 captures**
  - 9 new implants

# High Priority Female Fish Spring 2024



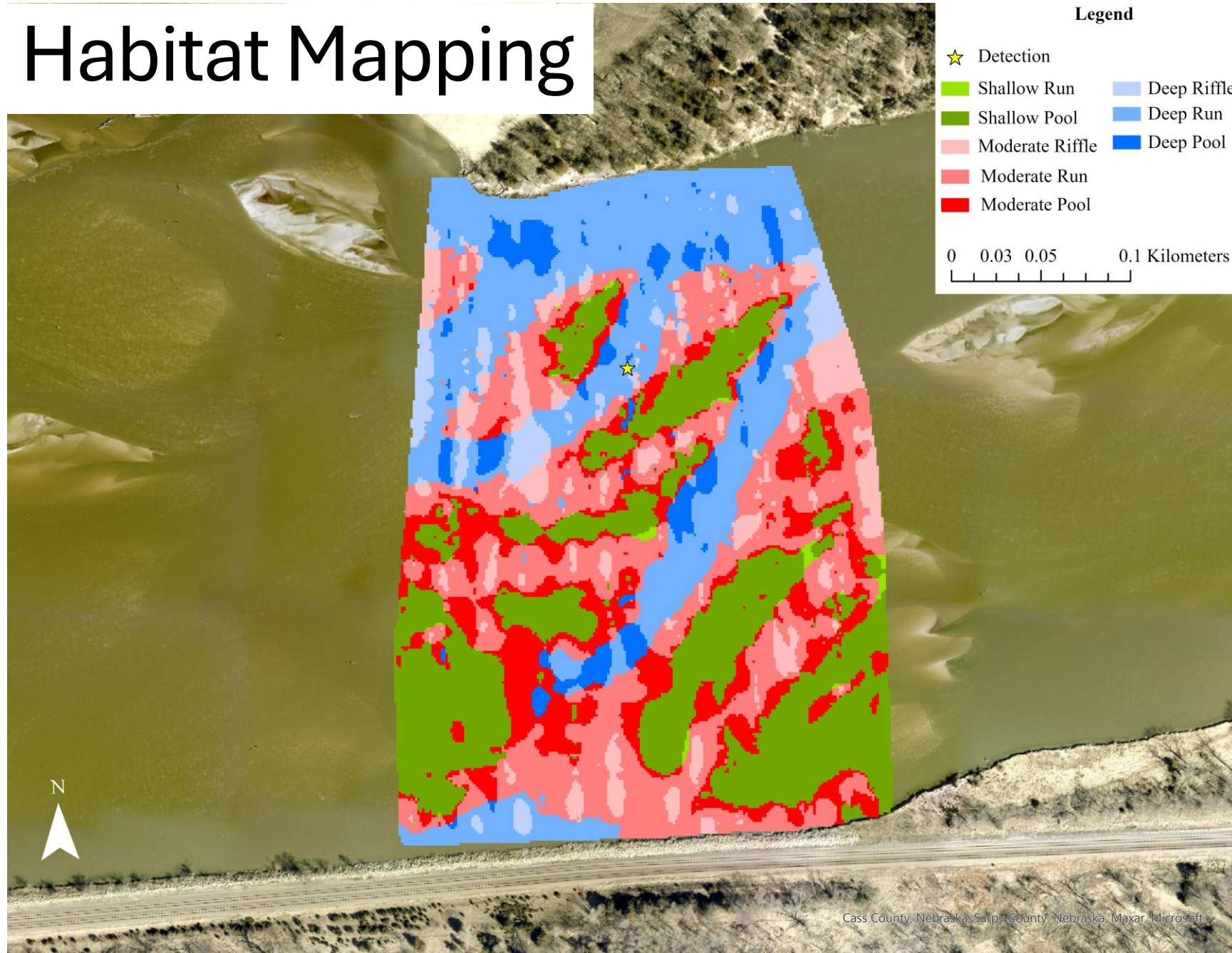
A69-1604-22188

# Detections and Captures 2022-2024





# Habitat Mapping



- Habitats based on depth categories and Froude values

(Yu 1996)

- Pallid detected (star) in deep run which comprises 23% of area mapped